

*EWIC - Slovenia 2008*

# Modern procedures in Artificial Insemination

Federation of European Irish Wolfhound Clubs  
Congress EWIC Slovenia 2008



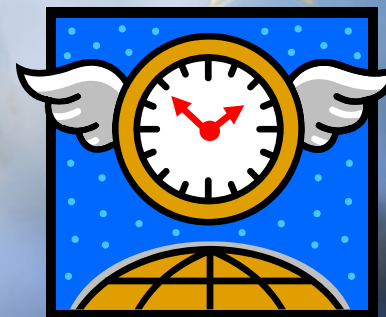
*Dr. Ludovica Salamon, S. Alessio PV, ITALY, [www.cloneitaly.com](http://www.cloneitaly.com)*

# Space and time

- Semen preservation for shipping it.



- Semen preservation for storing it and using it later.



# Chilled Semen

- For shipping the semen through all Europe and to or from USA and Canada.
- Time of preservation: 48-72 hours in perfect conditions. It may last one week in good conditions.





# How to ship chilled semen

- Express courier:  
DHL, FedEx, UPS, TNT...



- Airport to airport.



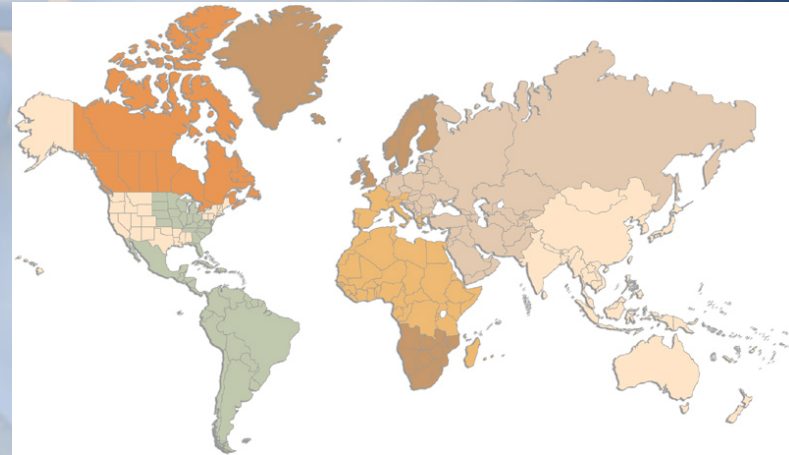
## A.I. with chilled semen

- Soft catheter.
- Norwegian catheter.
- Optical fibres.



# Frozen semen

- For shipping semen anywhere.
- For storing semen with no limits of time.





# Straws and pellets

- Semen is frozen in already identified straws. One dose is from 1 to 4 or more straws.
- Semen is frozen loose and then is put in identified pellet. One dose is 1 pellet.



# How to store and ship frozen semen

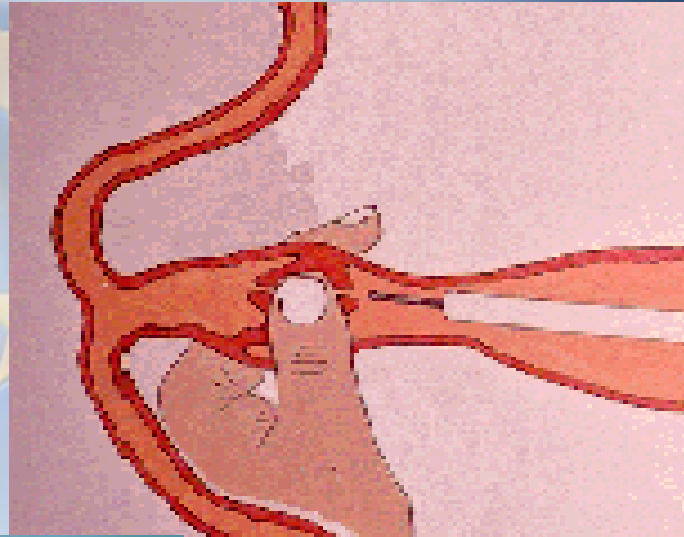
- Stored in big tanks with LN Liquid Nitrogen. Semen banks.
- Shipped in small tanks named Dry or Vapour Shippers, they keep the cold from 48 hours till 3 weeks depending on the size. Rentals. Shipped by express couriers or airport to airport.





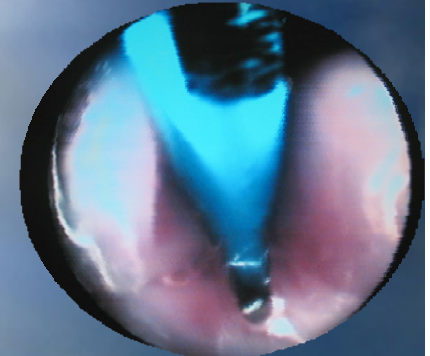
# A.I. with frozen semen

- Norwegian catheter.



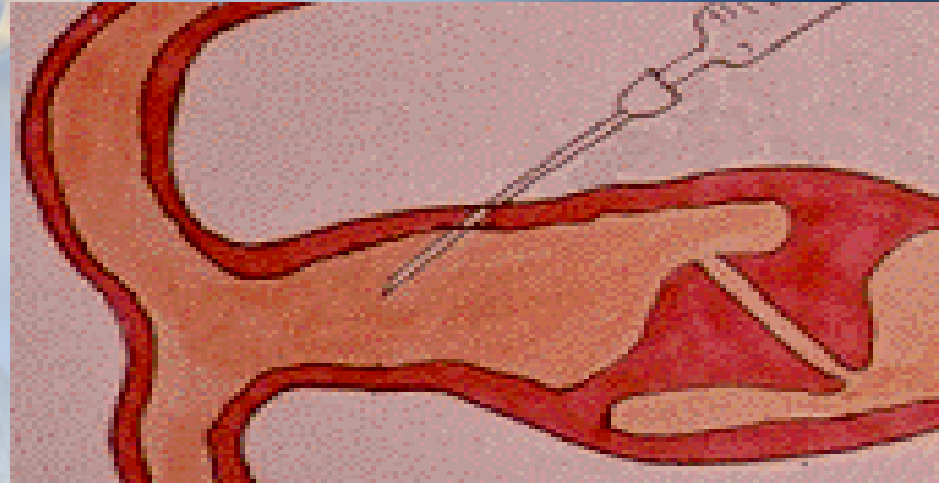
# A.I. with frozen semen

- Optical fibres, transcervical.



# A.I. with frozen semen

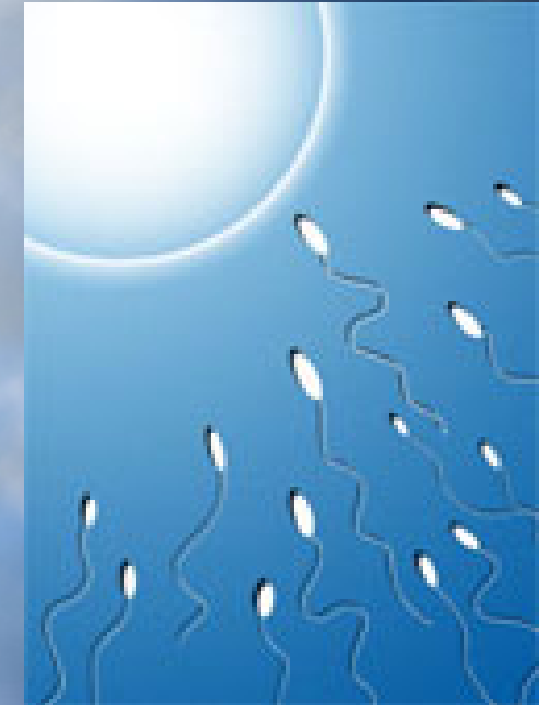
- Surgical.



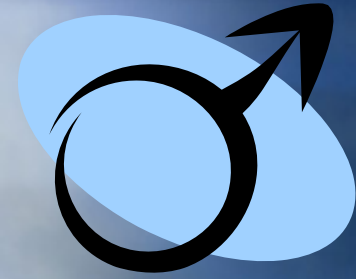


# Frozen semen quality

- Post thawing motility.
- Insemination dose.



# Male checking

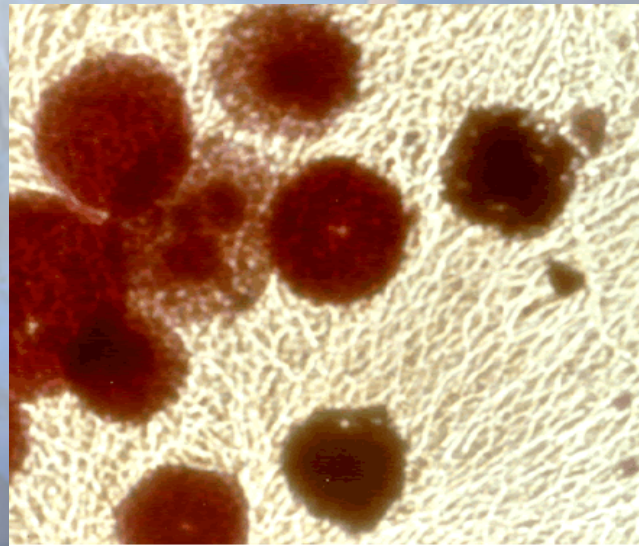


- Fresh semen quality.
- Testicles and prostata by ultrasound.
- Infections from bacteria, mycoplasma and herpes virus.
- Hormone.

# Female checking



- Infections from bacteria and mycoplasma.
- Blood test for herpes virus.
- Blood test for thyroid hormone.
- Blood test for progesterone.

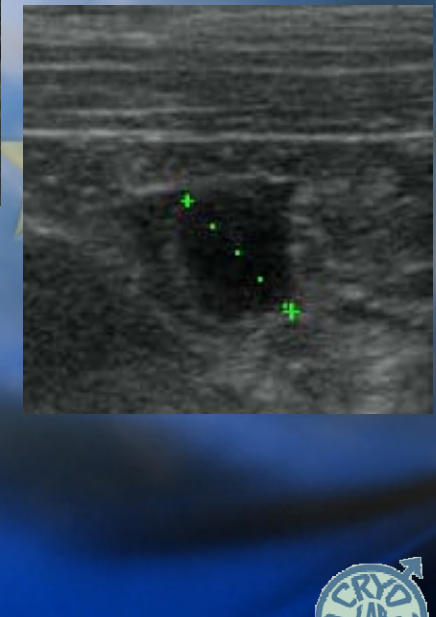
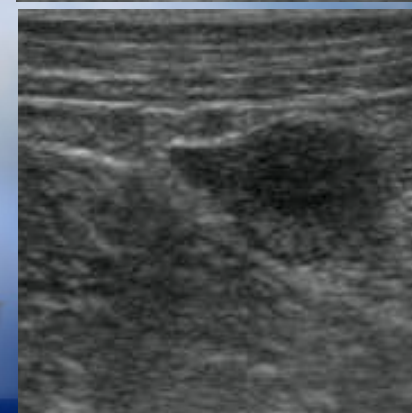
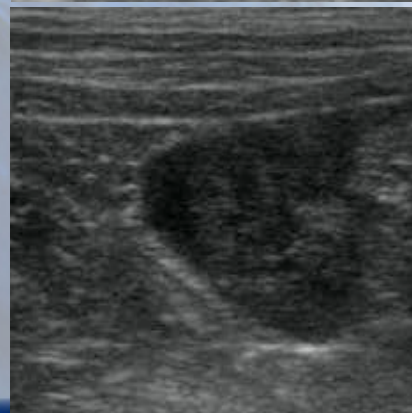
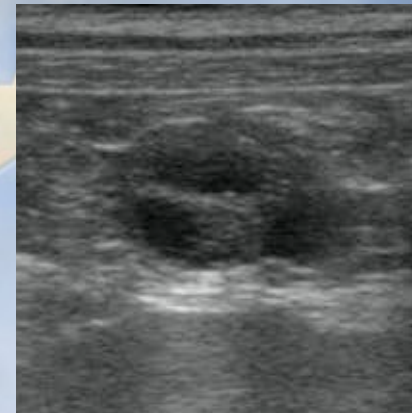
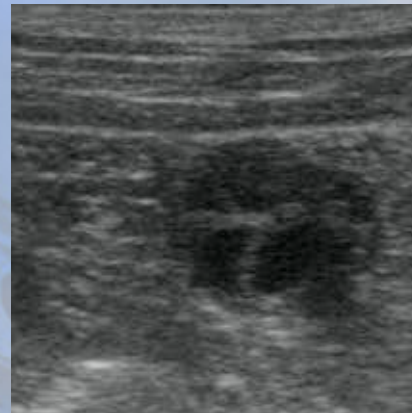




# Female checking



- Echographic follow up of follicular growth during ovulatory estral phases.



## Success rate

- A.I. with fresh semen: > 90%
- A.I. with chilled semen: > 90%
- A.I. with frozen semen: about 80% with a small reduction of the number of puppies in the litter.





A.I. as seen by Matilde,  
8 years old

